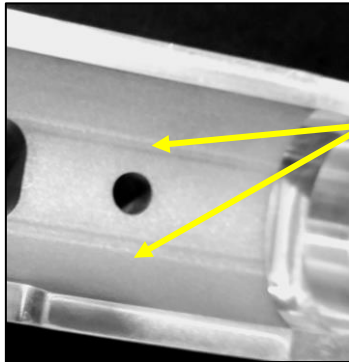


Installation Instructions

Trigger should be installed on barreled-action prior to installing on chassis.

**If you are using a factory Remington 700 receiver, will need to inlet the magazine well for the AICS style detachable magazine to completely engage or for the internal magazine with floor plate to completely close. Using a Dremel tool is optional or have a gunsmith mill it out for you.*

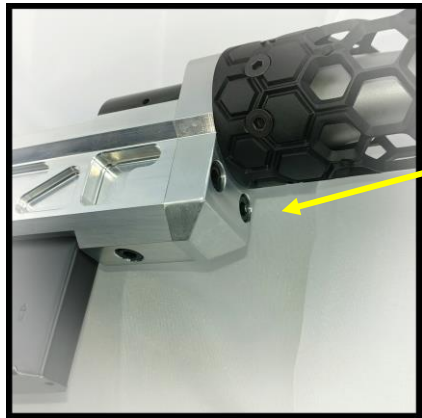


Center Barreled-Action on Chassis Risers so trigger drops into trigger well.

Align bedding bolts in chassis to holes in bottom of receiver. The rear bolt is under the trigger guard and can be accessed through a hole in the rear of the trigger guard.

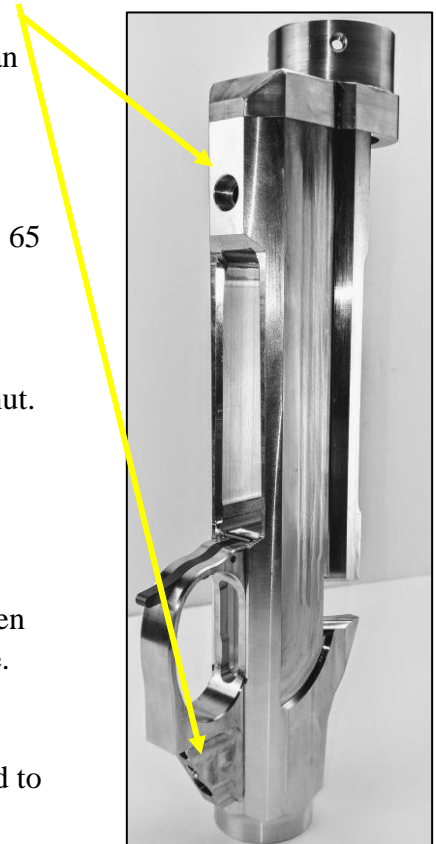
Install both bolts most the way in, so it can just barely move. While holding action tight to chassis, push recoil lug tight against the chassis core face.

Tightened forend bolt first then the rear bolt to pull action snugly to chassis (tightened per action manufacturer instructions (generally 40 to 65 inch lbs. of torque).



Handguards will not use the barrel nut. Instead install Handguard mount by sliding the mount over the end of barrel. Slide mount back to core.

Align dowel holes in mount over dowels in core. Press together, tighten 2 front bolts to secure mount to core. Install handguard to mount. Please note: some accessories should be installed before mounting handguard to mount.



Install Buttstock & Pistol Grip per manufacturer instructions.

Questions: Please contact Best Damn Gun, LLC 1-888-824-2774